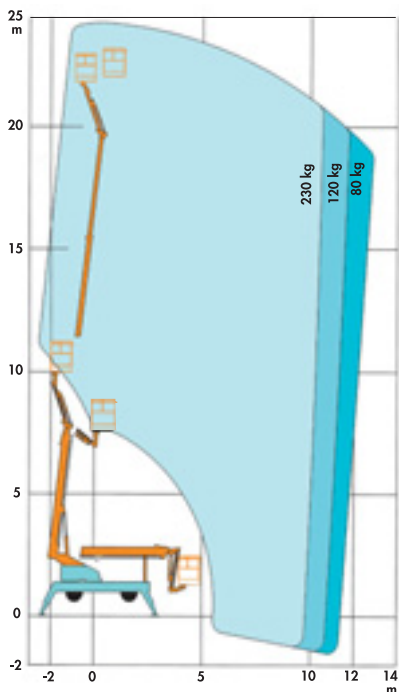


NOSTOLIFT XS 240

SELF PROPELLED TELESCOPIC PLATFORM

TECHNICAL DATA

BOOM GEOMETRY



Allowed ground inclination 8°/12,5%.



SPECIFICATIONS

HEIGHT

Working Height 24 m
Platform Height 22 m

DIMENSIONS

Length 6,95 m
Width 2,10 m
Height 2,30 m
Weight 4850 kg

Basket Dimensions 0,85 m x 1,78 m
Wheel Base 2,95 m
Support Width 4,5 m

WORK SPECIFICATIONS

Boom Type Telescopic with Flyjib
Boom Construction High Strength Steel
Lifting Capacity 230 kg/2 persons
Max. Outreach 12,8 m/80 kg
10,5 m/230 kg
Basket Rotate 90°
Turning Radius 3,2 m inside, 5,0 m outside
Boom Rotation 360° Unlimited
Ground Clearance 0,40 m
Gradeability 19°/35%
Automatic levelling

OPERATING SPEED

3 Speed Selector Max. 5 km/h

POWER TRAIN & CAPACITIES

4 WD
2 WS
4 WS & Crab Steer
Tyre Size 10/75-15,3 Rough Pattern
Oscillating Front Axle 350/50-16 Street Pattern
Hydraulic Platform Rotation
24 V Operating Voltage

Engine Kubota 1505, 4 cylinder diesel, water cooled
Fuel Capacity 60 l
Brakes 4 Hydraulic Discs, Spring Applied

Control System Proportional

DIMENSIONS



4850 kg total

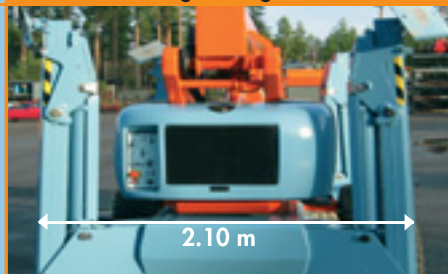
Weight



2.30 m

6.95 m

Length/Height



2.10 m

Width