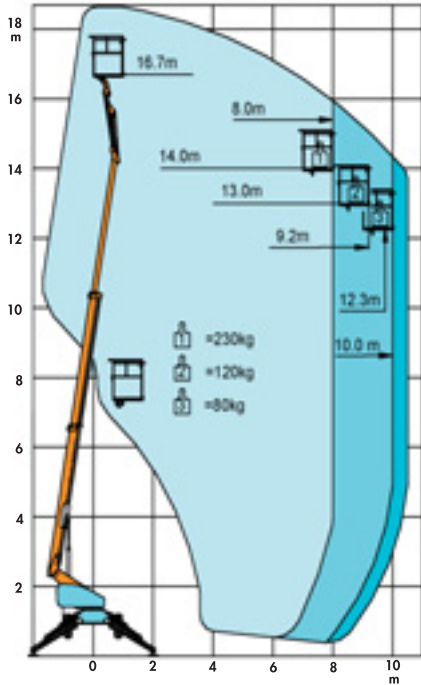


NOSTOLIFT XS 190

SELF PROPELLED TELESCOPIC PLATFORM

TECHNICAL DATA

BOOM GEOMETRY



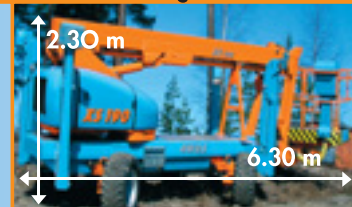
SPECIFICATIONS

HEIGHT	
Working Height	18,7 m
Platform Height	16,7 m
DIMENSIONS	
Length	6,3 m
Width	2,1 m
Height	2,3 m
Weight	3700 kg
Basket Dimensions	0,85 m x 1,78 m
Wheel Base	2,3 m
Support Width	4,05x4,65 m
WORK SPECIFICATIONS	
Boom type	Telescopic with Flyjib
Boom Construction	High Strength Steel
Lifting Capacity	230 kg/2 persons
Max. Outreach	12,3 m/80 kg 8,0 m/230 kg
Basket Rotate	90°
Turning Radius	3,0 m inside, 5,0 m outside
Boom Rotation	360° Unlimited
Ground Clearance	0,47 m
Gradeability	19°/35%
Manual levelling	
OPERATING SPEED	
2 Speed Selector	Max. 3,6km/h
POWER TRAIN & CAPACITIES	
4 WD	
2 WS	
4 WS & Crab Steer	
Tyre Size	10/75-15,3 Rough Pattern 350/50-16 Street Pattern
Oscillating Front Axle	
Hydraulic Platform Rotation	
24 V Operating Voltage	
Engine	Kubota 1105, 3 cylinder Diesel Water Cooled, Low Noise Level
Fuel Capacity	65 l
Brakes	4 Hydraulic Discs, Spring Applied
Control System	Full Hydraulic

DIMENSIONS



Weight



Length/Height



Width